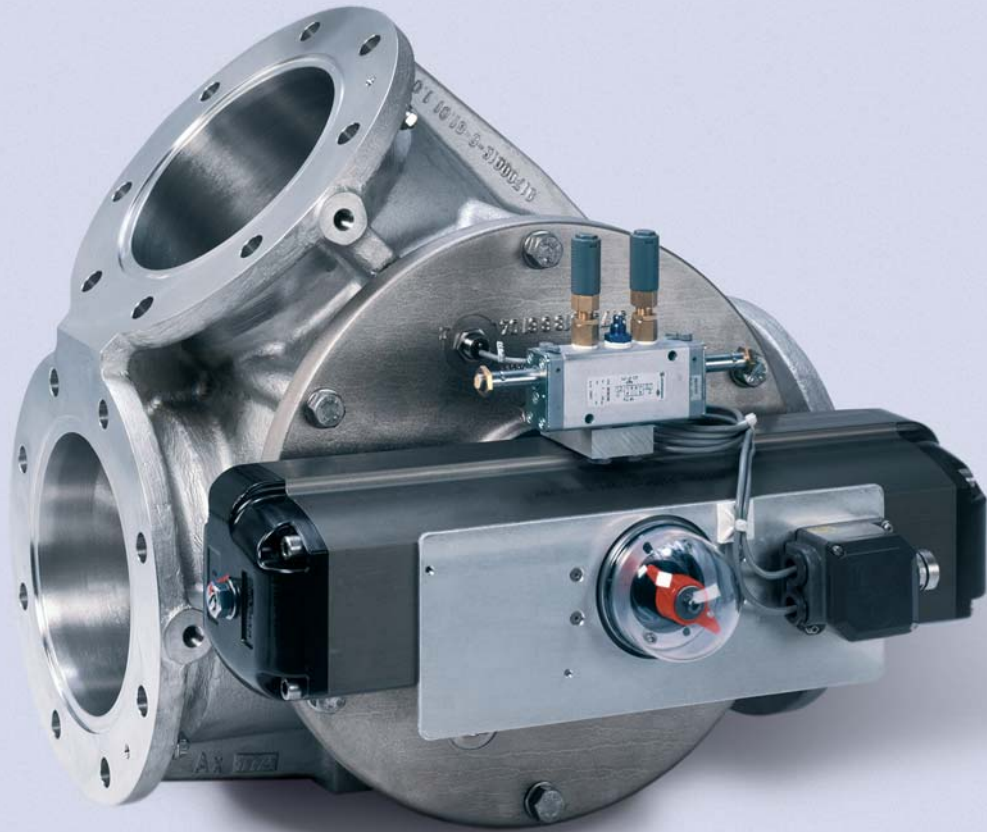


COMPONENTS



NGV-Diverter valve

Application

The NGV-Diverter valve is used especially for diverting the bulk material flow in pneumatic dense- and dilute-phase conveying systems. The patented design of the plug enables application in any conveying direction.

Versions

- DN 65 – DN 300
- Diverter valves NGV and NGY, silo filling diverter valve NGT
- Made of aluminium, aluminium with cast-in stainless steel pipe or stainless steel

New Sealing Concept

The diverter valves of the New Generation combine optimal efficiency in daily use with maximal process availability. In order to meet the individual requirements following sealing variants are offered:

- Non-contact sealing system for best possible tightness due to labyrinth sealing and purge air facility.

Advantage: Fulfilment of the highest purity requirements – e.g. for Polycarbonate in CD quality.

- Lateral sealing - no contact between bulk solids and sealing (change-over during product stream)

Advantage: Reduction of operating expenses – no interruption of the conveying processes, no purging during change-over required, minimal abrasion of bulk solids.

- Static, self-pressing sealing inside the housing for high pressure differences, without leakage during conveying process.

Advantage: Minimisation of investments – no additional shut-off devices in the conveying lines are required, minimal abrasion of sealing.

- Inflatable sealing inside the housing for finest powder or cleaning possibility without leakage.

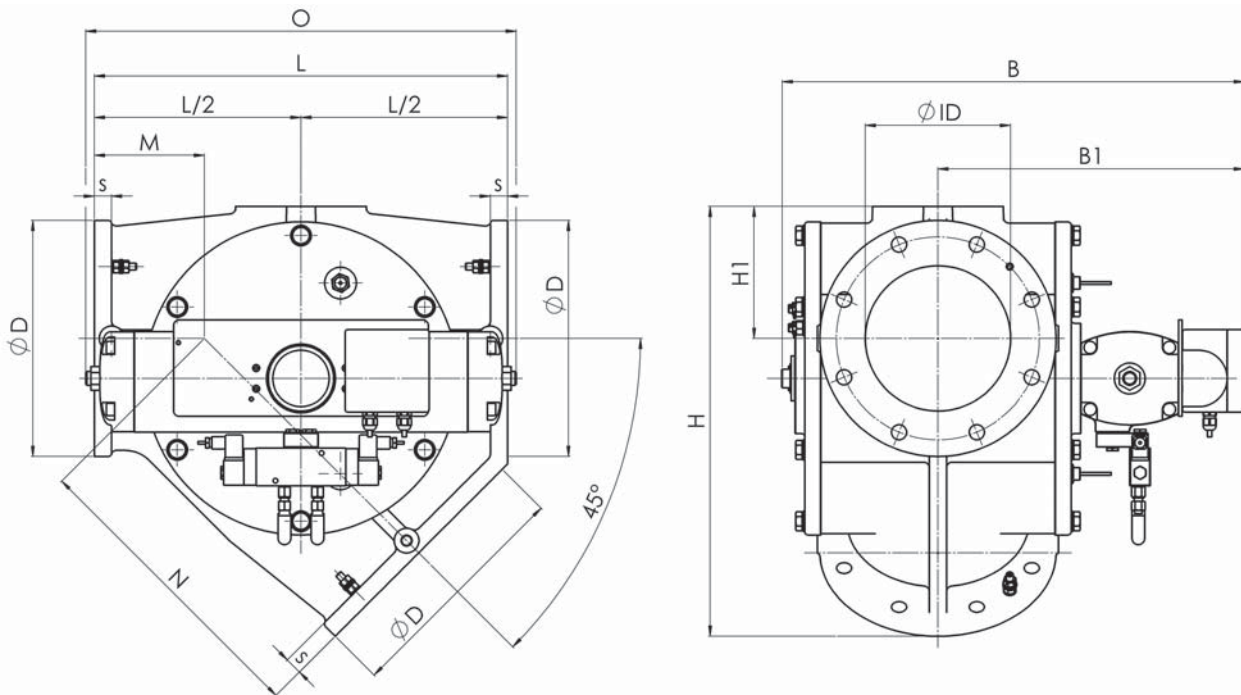
Advantage: Maximal safety – cleaning possibility without leakage, absolute tightness also for finest powders. Highest possible sealing efficiency in every operating level.

ZEPPELIN®

Design features

- suitable for pneumatic dense- and dilute-phase conveying systems
- smooth and gap-free transition due to patented design of inlet and outlet
- single channel design avoids plugging
- high dust and pressure tightness due to sealing pressing against the housing
- pressure tight from vacuum up to +6.0 bar (g) to the outside and the switched conveying direction
- high reliability based on maintenance-free actuator
- solid temperature range from -20°C up to +120°C and ambient temperature range from -20°C up to +40°C for standard design
- no additional safety device necessary as there are no moving parts outside the valve
- easy installation in all orientations due to integrated cast flanges and supports
- easy subsequent change of complete drive from left to right side of diverter valve
- easily visible direction indicator of plug orientation
- direct control of plug orientation by proximity switches
- all bolts in stainless steel
- easily accessible flanges; no special connections required
- low total weight
- standard design with electrical connections in IP 65
- diverting angle 45°

Sketch



Type	DN	ANSI	ØID	ØD	s	L	M	N	H	H1	B	B1	O
NG V- 65	65		(71)										
NG V- 80	80	3"	(84)										
NG V-100	100	4"	(102/108)										
NG V-125	125	5"	127/134	254	20.0	450	121	329	464.3	142	561	384	535
NG V-150	150	6"	151/160	285	22.5	500	134	366	516.5	157	591	399	535
NG V-185			185	343	25.0	600	160	440	624.5	192	672	445	625
NG V-200	200	8"	211	343	25.0	600	160	440	624.5	192	672	445	625
NG V-230			(230)										
NG V-250	250	10"	(250)										
NG V-300	300	12"	(298)										

Design changes reserved

ZEPPELIN®